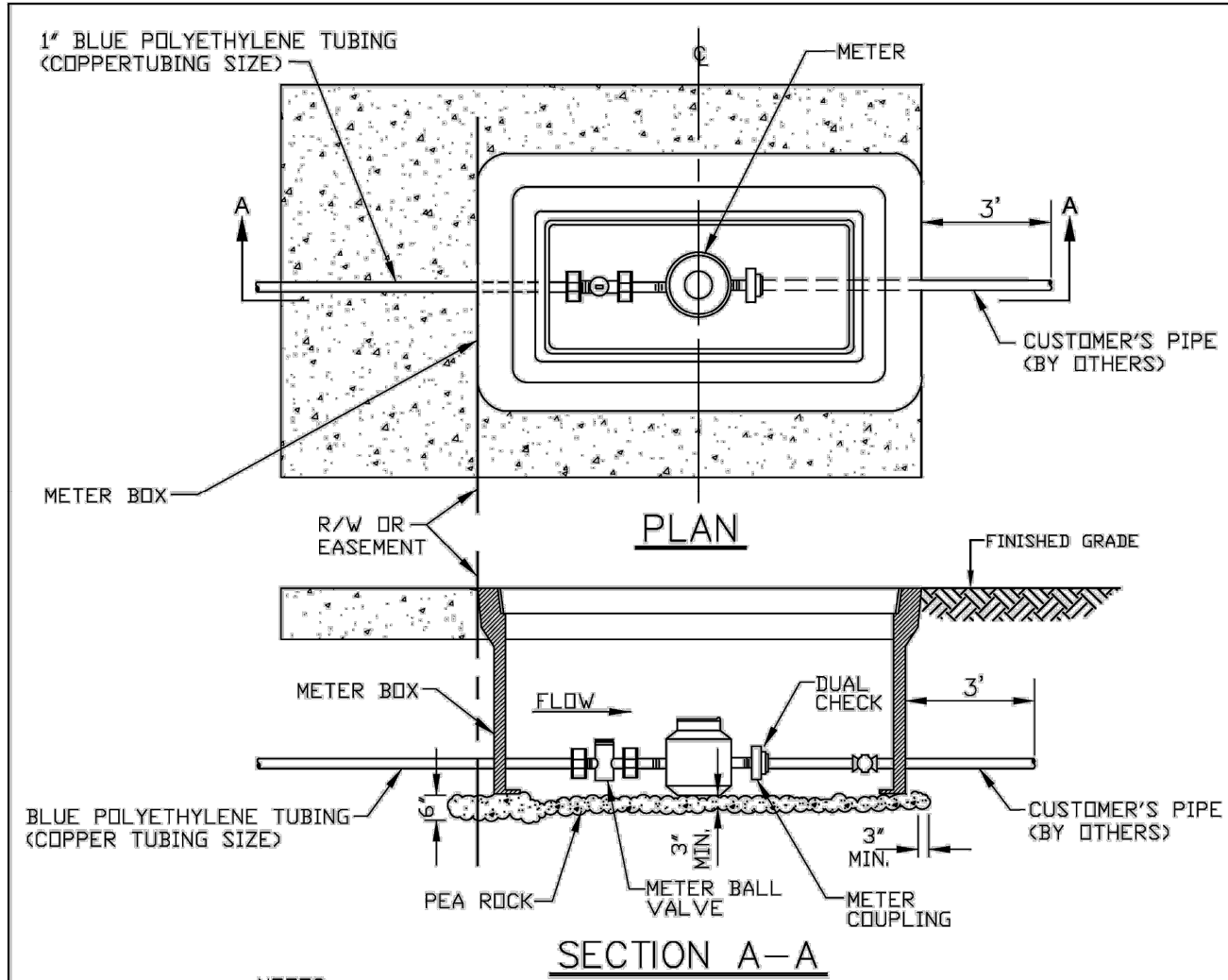


VALVE BOX SETTINGS

ENGINEERING STANDARDS 2025			
REVISIONS		ENGINEERING DIVISION CITY OF POMPANO BEACH SCALE: N.T.S.	VALVE BOX SETTINGS <div> DATE: <u>MAY 2022</u> DWG. NO. 102-1 </div>
BY	DATE		
S.S.	04-2005		



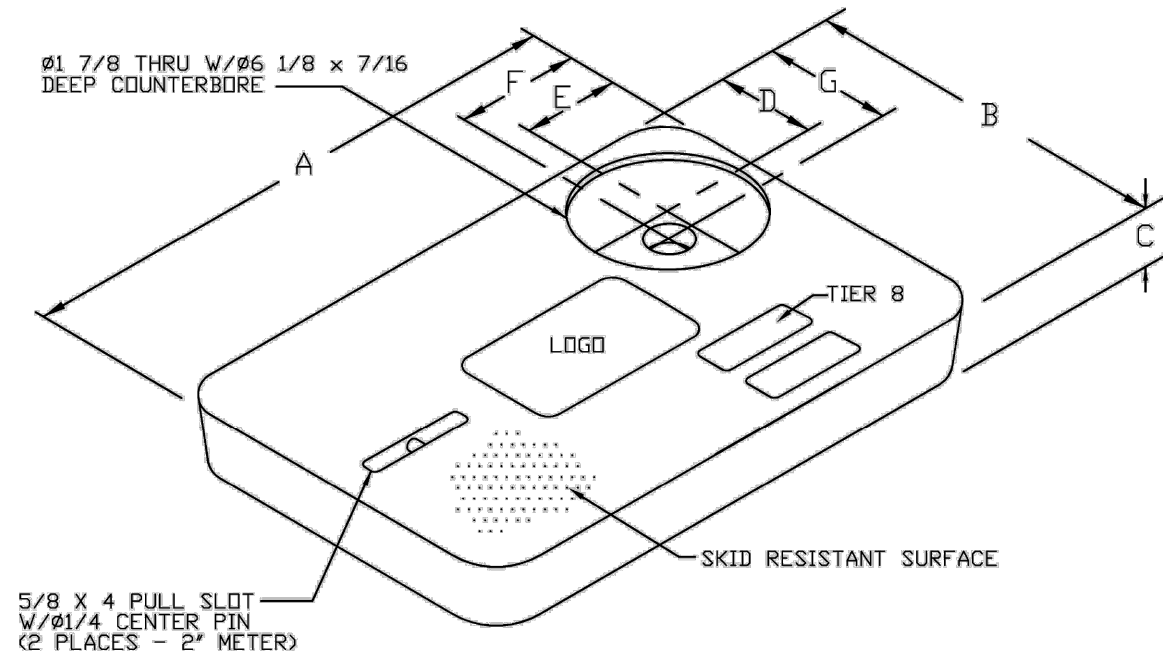
NOTES:

1. ALL METERS WILL BE SUPPLIED AND INSTALLED BY CDPB UTILITIES. METER HAS IRON PIPE THREAD MALE CONNECTION ON EACH END.
2. METER SHALL BE CENTERED IN BOX.
3. DUAL CHECK IS SAME SIZE AS CUSTOMER'S SERVICE LINE.

METER SIZE	LAYING LENGTH (IN)	HEIGHT (IN)
5/8"	7.5	4.56
1"	10.75	5.75

METER BOX INSTALLATION

ENGINEERING STANDARDS 2025			
REVISONS		ENGINEERING DIVISION CITY OF POMPANO BEACH	METER BOX INSTALLATION FOR 5/8" AND 1" METERS <div> DATE: JAN. 2022 DWG. NO. 105-2 </div>
BY	DATE		
S.S.	11-2012		
SCALE: N.T.S.			



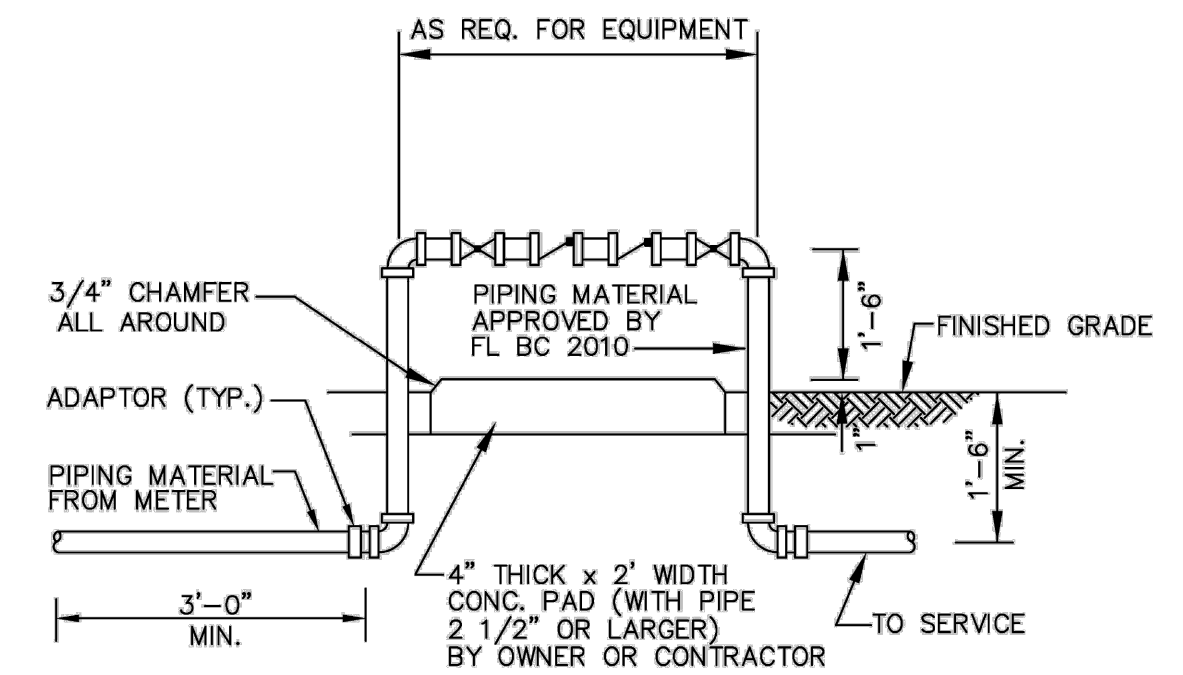
METER BOX COVER DIMENSIONS (IN)							
METER SIZE	A	B	C	D	E	F	G
1"	18 1/8"	11 1/4"	1 3/4"	3 3/4"	4"	4 9/16"	4 5/16"
1 1/2"	23 1/4"	13 3/4"	2"	4"	4"	4 9/16"	4 9/16"
2"	30 1/2"	17 1/2"	2"	4"	4"	4 9/16"	4 9/16"

NOTES

1. CUSTOMER IS CITY OF POMPAÑO BEACH FLORIDA
LOGO TO BE SPECIFIED: CITY OF POMPAÑO BEACH POTABLE WATER
2. FITS NEPTUNE R450 ANTENNA
3. THIS COVER IS RATED FOR A STATIC DESIGN LOAD OF 8,000 LBS. (35,548 N)
OVER A 10 (254) X 10 (254) AREA AND MUST PASS A MINIMUM STATIC TEST
LOAD OF 12,000 LBS (53,376 N).
4. METER BOX COVER SHOULD BE RATED FOR TRAFFIC CONDITION AS
DETERMINED BY ENGINEER OF RECORD.

POTABLE WATER METER BOX COVER

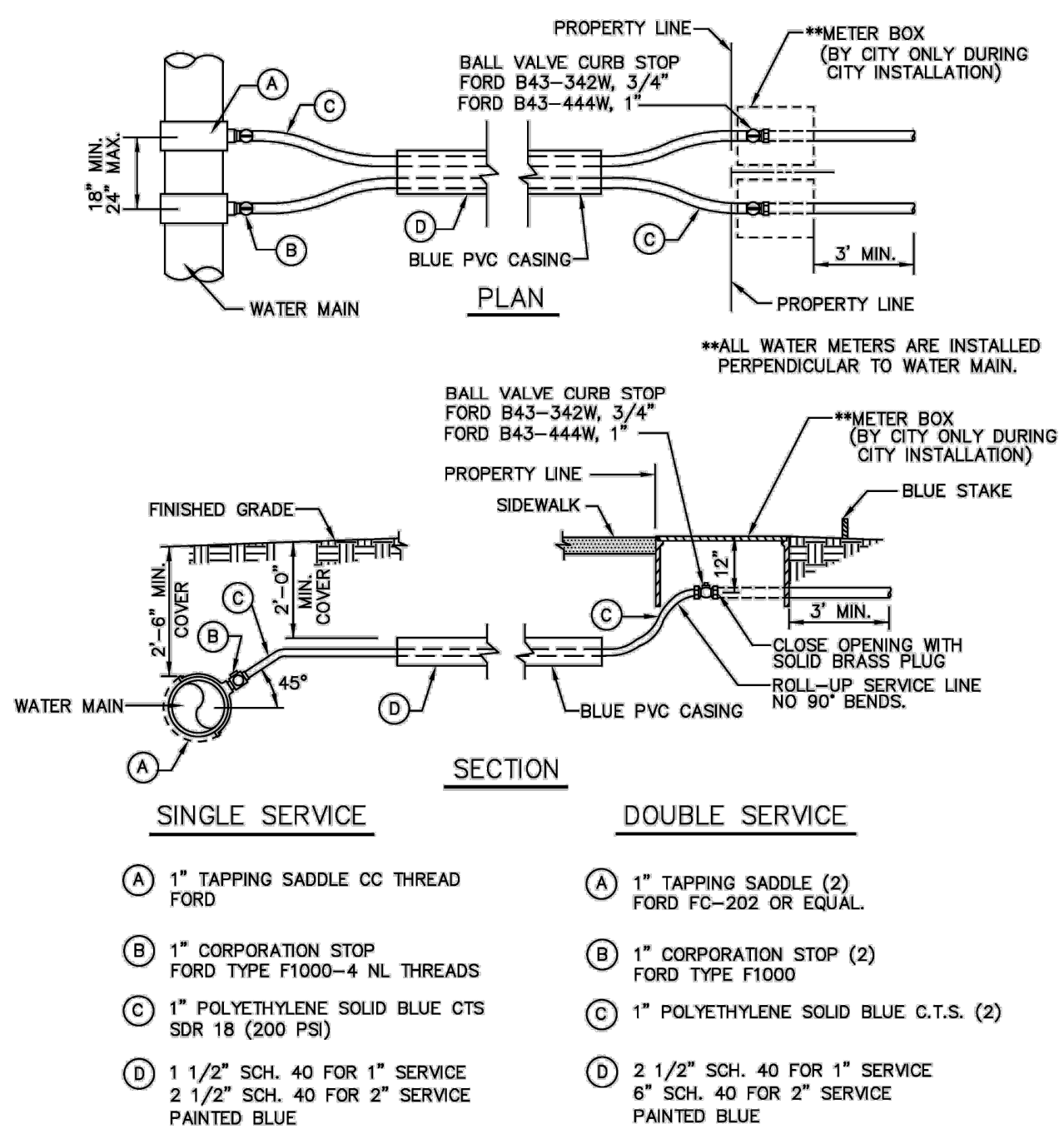
ENGINEERING STANDARDS 2025			
REVISONS		ENGINEERING DIVISION CITY OF POMPANO BEACH	TYPICAL METER BOX COVER
BY	DATE		
S.S.	11-2012		
SCALE: N.T.S.			DATE: JAN. 2022 DWG. NO. 105-3



BACKFLOW PREVENTER

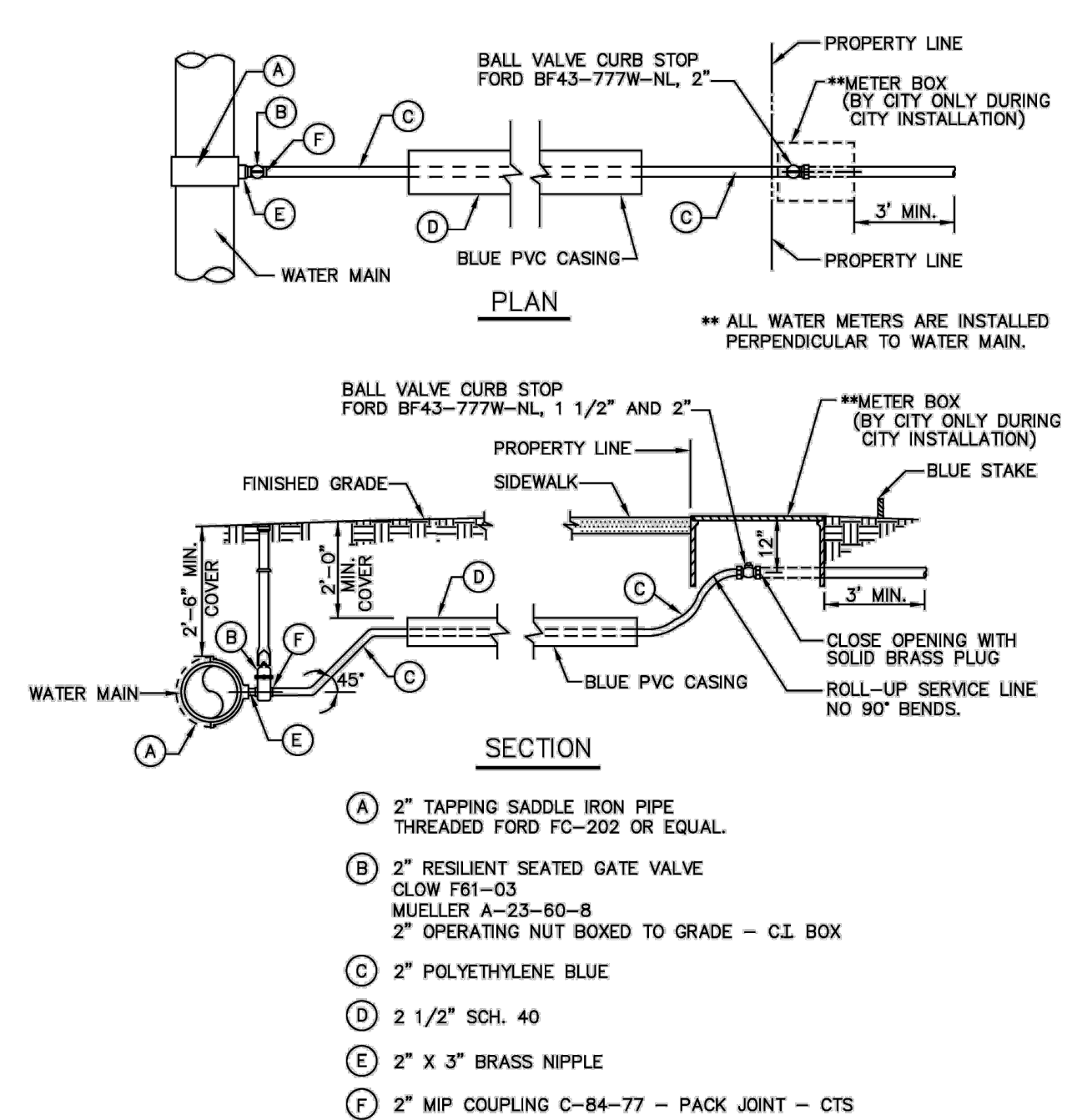
USE MEGALUGS AT ALL PIPE JOINTS 3" AND LARGER
PLEASE SEE METER INSTALL DIMENSION LIST ON STANDARD NO. 106-4
SMALL UNITS UNI-STRUT SUPPORT

ENGINEERING STANDARDS 2025			
REVISIONS		ENGINEERING DIVISION CITY OF POMPANO BEACH	BACKFLOW PREVENTER
BY	DATE		
T.W.	04-2008		
S.S.	03-2009		
S.S.	11-2012		
S.S.	01-2013		
SCALE: N.T.S.		DATE: MAY 2022 DWG. NO. 106-1	



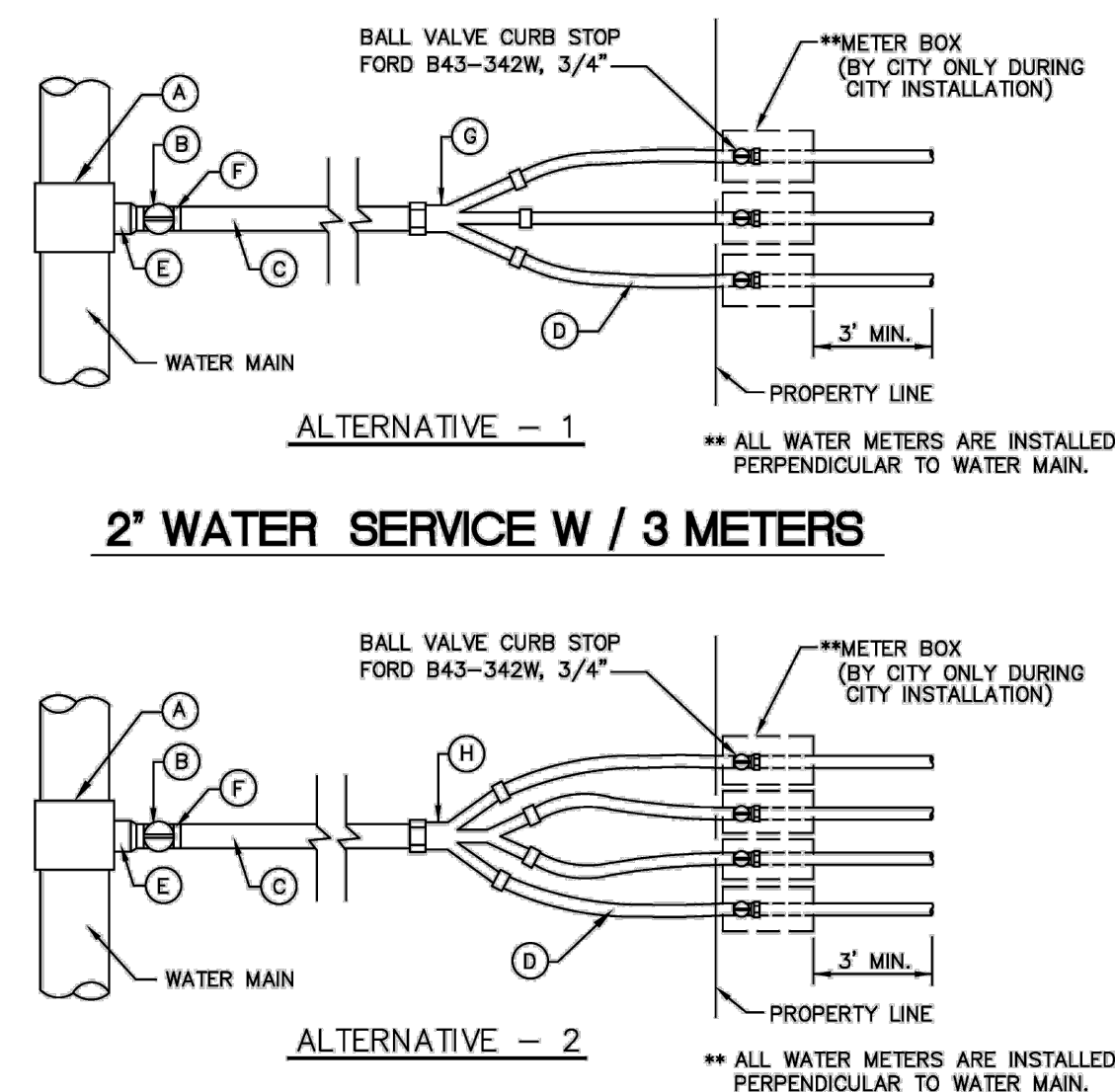
TYPICAL 3/4" AND 1" WATER SERVICE

ENGINEERING STANDARDS 2025			
REVISIONS		ENGINEERING DIVISION CITY OF POMPANO BEACH	TYPICAL 1" WATER SERVICE
BY	DATE		
T.W.	11--2007		
S.S.	05--2012		
S.S.	11--2015		
A.S.	08--2021		
SCALE: N.T.S.		DATE: MAY 2022 DWG. NO. 107-1	



TYPICAL 1 1/2" AND 2" WATER SERVICE

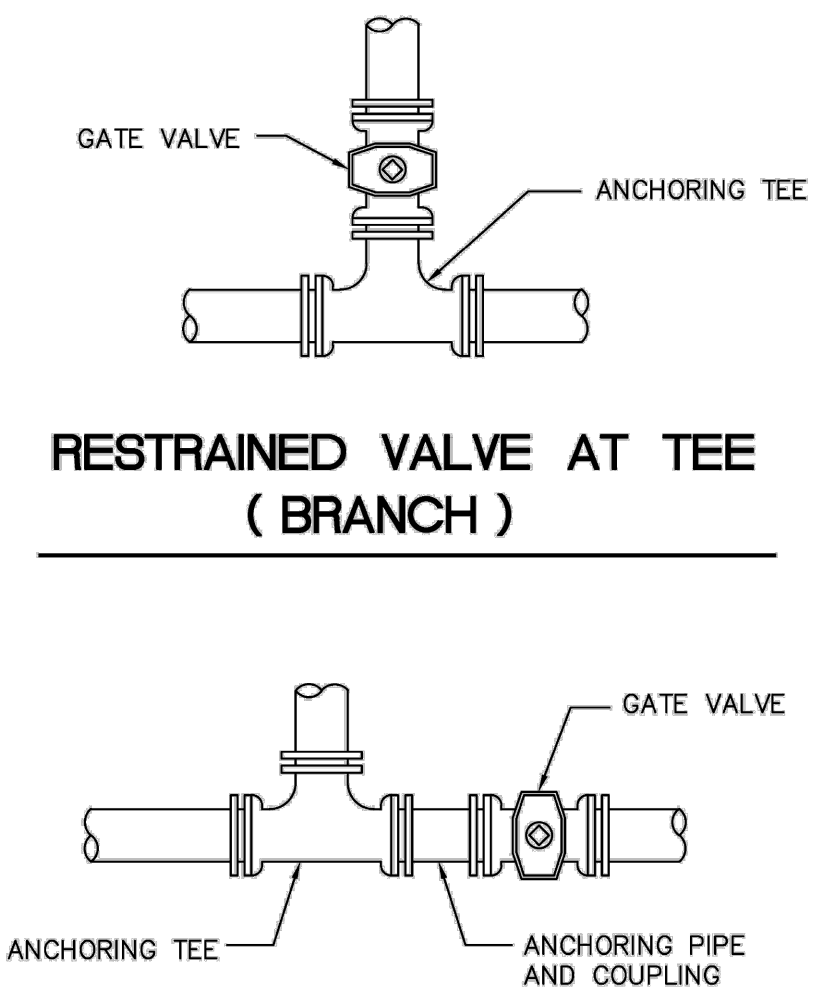
ENGINEERING STANDARDS 2025			
REVISIONS		ENGINEERING DIVISION CITY OF POMPANO BEACH	TYPICAL 2" WATER SERVICE
BY	DATE		
S.S.	05-2011		
S.S.	05-2012		
S.S.	11-2018		
A.S.	08-2021		
SCALE: N.T.S.		DATE: APRIL 2022 DWG. NO. 107-2	



2" WATER SERVICE W / 4 METERS

<p>(A) 2" TAPPING SADDLE IRON PIPE THREADED FORD FG-202 OR EQUAL</p> <p>(B) 2" RESILIENT SEATED GATE VALVE CLOW F61-03 MUELLER A-23-60-8 2" OPERATING NUT BOXED TO GRADE - C.I. BOX</p> <p>(C) 2" BLUE POLYETHYLENE</p>	<p>(D) 1" POLYETHYLENE SOLID BLUE C.T.S. (3)</p> <p>(E) 2" x 4" BRASS NIPPLE</p> <p>(F) 2" MIP COUPLING C-64-77 - PACK JOINT - CTS</p> <p>(G) 3" Y" BRANCHES - Y48-347 FORD</p> <p>(H) 4" Y" BRANCHES - 08Y40Q A.Y. McDONALD</p>
---	--

ENGINEERING STANDARDS 2025			
REVISONS		ENGINEERING DIVISION CITY OF POMPANO BEACH	2' WATER SERVICE "Y" BRANCHES ALTERNATIVES
BY	DATE		
S.S.	11-2012		
SCALE: N.T.S.		DATE: MAY 2022 DWG. NO. 107-3	



RESTRAINED VALVE AT TEE
(IN LINE)

USE MEGALUGS AT ALL PIPE JOINTS

ENGINEERING STANDARDS 2025			
REVISIONS		ENGINEERING DIVISION CITY OF POMPANO BEACH	RESTRAINED VALVE AT TEE
BY	DATE		
S.S.	JUNE 2005		
SCALE: N.T.S.		DATE: MAY 2022 DWG. NO. 111-1	